

# Self-evaluation Summary Dashboard

Produce custom dashboards at [fftaspire.org](https://fftaspire.org)

## Saracens High School

LA Barnet DFE 3024011 Produced November 2023

### Reports

- Overview
- Attainment & Progress
- Pupil groups
- Subjects
- Disadvantaged pupils
- Scatterplot
- Context

### What it tells you

- What are the strengths and weaknesses of your school?
- How does attainment and pupil progress at your school compare to the national average?
- How are you performing in different subjects?
- Do you have any under-performing groups of pupils?
- How might the context of your school affect performance?
- How does pupil attendance compare to the national average?

### About the data shown



#### Filters

No filters chosen (all pupils included)  
You can use filters to view a subset of pupils



#### Indicators

Attainment / Progress 8 (Overall)  
% English & Maths (Grade 4+)



#### Contextual value added

Achievement is compared with similar pupils nationally. The FFT CVA model uses prior attainment, gender and month of birth, FSM eligibility, ethnic group, SEN status, EAL and mobility as a starting point.

# Overview

## KS4 Attainment 2023 · Actual results

146 pupils

Attainment 8 (Overall)

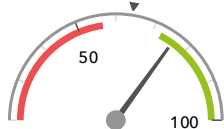
5.2+



Significantly above the national average (4.6) ◀

% English & Maths (Grade 4+)

76%+



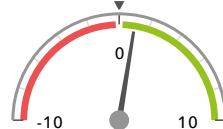
Significantly above the national average (64%) ◀

## KS4 Progress 2023 · Contextual Value Added

133 matched pupils

Progress 8 (Overall)

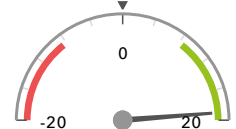
+1.03+



Significantly above the national average (0) ◀

% English & Maths (Grade 4+)

+19%+



Significantly above the national average (0%) ◀

## KS4 higher and lower performing pupil groups 2023

Minimum group size: 10

	Higher performing	Lower performing
<b>Overall achievement</b> pupil progress	Higher attainers (34)+ Female (51)+ FSM (in last 6 years) (76)+	
<b>English</b> pupil progress	Black African (35)+ FSM (in last 6 years) (76)+ FSM (67)+	
<b>Mathematics</b> pupil progress	Higher attainers (34)+ Female (51)+ Spring Term (43)+	
<b>Subjects</b> pupil progress	Religious Studies GCSE (16)+ Spanish GCSE (58)+ Chemistry GCSE (26)+ Physics GCSE (26)+ D&T Food Technology GCSE (36)+	Music Non-GCSE (18) Physical Education/Sport Studies Non-GCSE (33) D&T GCSE (36)

### Census information

KS4's latest academic year uses the Spring 2023 DfE census – [learn more](#) · [See recent Aspire updates](#)

# Attainment & progress

## KS4 Attainment 2023

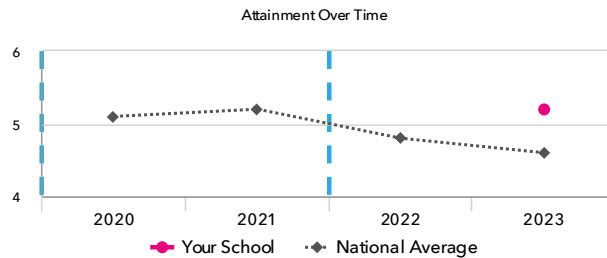
146 pupils

Attainment 8 (Overall)

**5.2**+



Significantly above the national average (4.6)



## KS4 Progress 2023

133 matched pupils

Progress 8 (Overall)

**+1.03**+



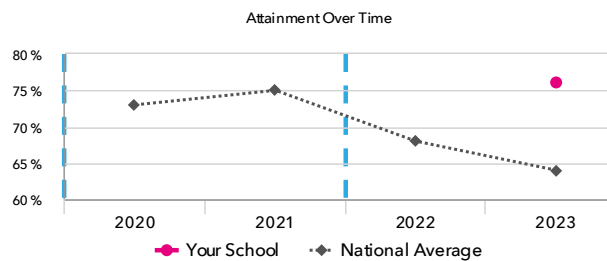
Significantly above the national average (0)

% English & Maths (Grade 4+)

**76%**+



Significantly above the national average (64%)



% English & Maths (Grade 4+)

**+19%**+



Significantly above the national average (0%)

## KS4 performance summary

	Actual results			Pupil progress		
	2021	2022	2023	2021	2022	2023
Number of Pupils / % Matched	-	-	146	-	-	92%
Attainment / Progress 8 (Overall)	-	-	5.2+	-	-	+1.03+
Attainment / Progress 8 (English)	-	-	5.4+	-	-	+1.00+
Attainment / Progress 8 (Maths)	-	-	5.2+	-	-	+1.00+
Attainment / Progress 8 (Ebacc)	-	-	5.2+	-	-	+1.23+
Attainment / Progress 8 (Open)	-	-	4.9	-	-	+0.86+
% English & Maths (Grade 4+)	-	-	76%+	-	-	+19%+
% English & Maths (Grade 5+)	-	-	62%+	-	-	+28%+
% Ebacc (Grade 4+)	-	-	38%+	-	-	+21%+
% Ebacc (Grade 5+)	-	-	27%+	-	-	+17%+
% 5+ GCSEs (Grade 7+)	-	-	19%	-	-	+12%+
Average entries per pupil	-	-	8.2	-	-	+0.6+
Average entries per pupil (GCSE only)	-	-	7.7+	-	-	+1.0+
% Pupils taking 3 single sciences	-	-	18%	-	-	+0%

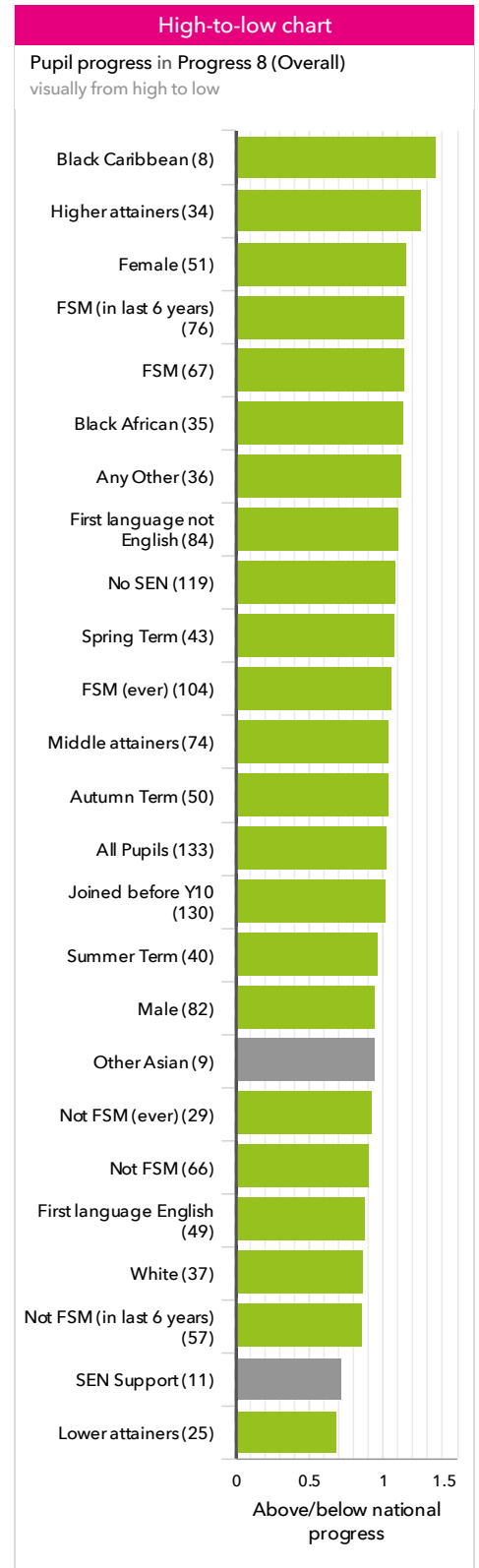
### Census information

KS4's latest academic year uses the Spring 2023 DfE census – [learn more](#) · [See recent Aspire updates](#)

# Pupil groups

## KS4 Pupil groups performance 2023

			Actual results		Pupil progress	
	Pupils		Attainment 8 (Overall)	% English & Maths (Grade 4+)	Progress 8 (Overall)	% English & Maths (Grade 4+)
<b>Summary</b>	All Pupils	146	5.2 <span>+</span>	76% <span>+</span>	+1.03 <span>+</span>	+19% <span>+</span>
<b>Gender</b>	Male	87	4.9 <span>+</span>	72% <span>+</span>	+0.95 <span>+</span>	+17% <span>+</span>
	Female	59	5.5 <span>+</span>	81% <span>+</span>	+1.16 <span>+</span>	+21% <span>+</span>
<b>DFE Prior Attainment</b>	Higher attainers	34	7.1	100%	+1.26 <span>+</span>	+8%
	Middle attainers	74	5.1 <span>+</span>	82% <span>+</span>	+1.04 <span>+</span>	+27% <span>+</span>
	Lower attainers	25	3.2	24%	+0.69 <span>+</span>	+9%
<b>Pupil Premium</b>	FSM (in last 6 years)	83	5.0 <span>+</span>	73% <span>+</span>	+1.15 <span>+</span>	+22% <span>+</span>
	Not FSM (in last 6 years)	63	5.3	79%	+0.86 <span>+</span>	+14% <span>+</span>
<b>FSM</b>	FSM	74	5.0 <span>+</span>	74% <span>+</span>	+1.15 <span>+</span>	+24% <span>+</span>
	Not FSM	72	5.3	78%	+0.91 <span>+</span>	+13% <span>+</span>
<b>FSM Ever</b>	FSM (ever)	111	5.0 <span>+</span>	75% <span>+</span>	+1.06 <span>+</span>	+21% <span>+</span>
	Not FSM (ever)	35	5.6	80%	+0.93 <span>+</span>	+10%
<b>Term of Birth</b>	Autumn Term	57	5.4 <span>+</span>	79% <span>+</span>	+1.04 <span>+</span>	+16% <span>+</span>
	Spring Term	46	5.0	70%	+1.08 <span>+</span>	+18% <span>+</span>
	Summer Term	43	5.0	79% <span>+</span>	+0.97 <span>+</span>	+23% <span>+</span>
<b>SEN Group</b>	SEN Support	12	4.0	50%	+0.72	+13%
	EHC Plan	4	1.3	0%	-0.32	-4%
	No SEN	130	5.4 <span>+</span>	81% <span>+</span>	+1.09 <span>+</span>	+20% <span>+</span>
<b>EAL</b>	First language not English	95	5.3 <span>+</span>	78% <span>+</span>	+1.11 <span>+</span>	+19% <span>+</span>
	First language English	51	4.9	73%	+0.88 <span>+</span>	+19% <span>+</span>
<b>Mobility</b>	Joined in Y10 or Y11	4	3.2	50%	+1.29	+41%
	Joined before Y10	142	5.2 <span>+</span>	77% <span>+</span>	+1.02 <span>+</span>	+18% <span>+</span>
<b>Ethnicity</b>	White	43	4.7	65%	+0.87 <span>+</span>	+14%
	Black Caribbean	8	4.5	63%	+1.36 <span>+</span>	+26%
	Black African	37	5.6 <span>+</span>	86% <span>+</span>	+1.14 <span>+</span>	+21% <span>+</span>
	Indian	3	4.5	33%	+0.27	-24%
	Pakistani	1	4.2	100%	+0.66	+66%
	Bangladeshi	1	6.4	100%	+2.09	+38%
	Other Asian	9	5.9	78%	+0.95	+9%
	Chinese	1	7.9	100%	+1.12	+2%
	Any Other	40	5.3	83% <span>+</span>	+1.13 <span>+</span>	+25% <span>+</span>
	Unknown	3	3.9	67%	+0.00	+2%



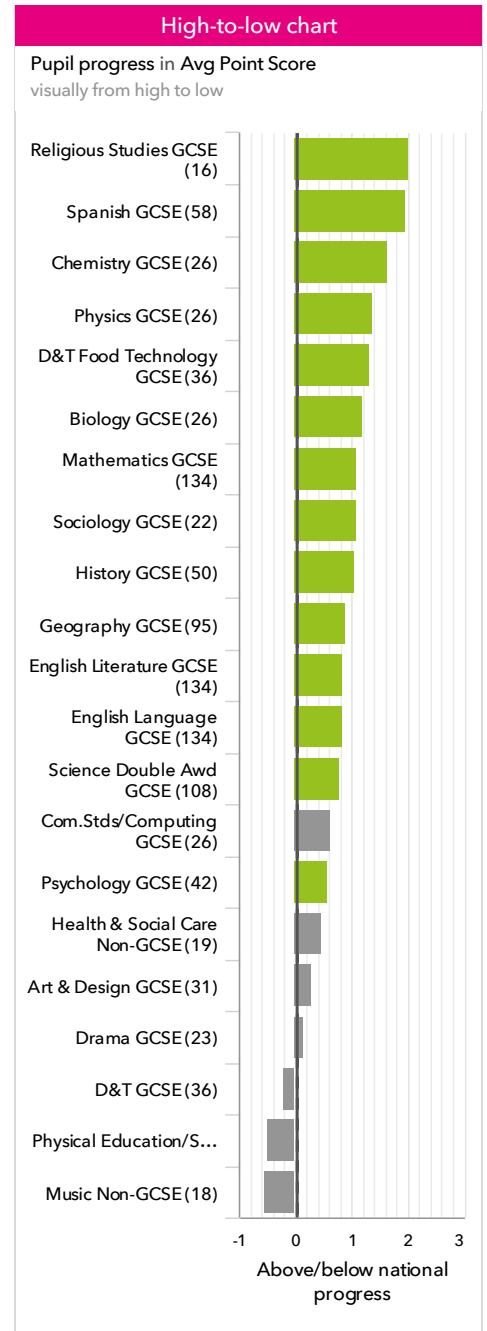
### Census information

KS4's latest academic year uses the Spring 2023 DfE census – [learn more](#) · [See recent Aspire updates](#)

# Subjects

## KS4 subject performance 2023

			Actual results			Pupil progress		
Pupils			Avg Point Score	% Grade 4+	% Grade 7+	Avg Point Score	% Grade 4+	% Grade 7+
<b>English and maths</b>	English Language GCSE	145	5.0	79% <span style="color: green;">+</span>	22%	+0.83 <span style="color: green;">+</span>	+16% <span style="color: green;">+</span>	+14% <span style="color: green;">+</span>
	English Literature GCSE	145	5.0	81% <span style="color: green;">+</span>	19%	+0.84 <span style="color: green;">+</span>	+16% <span style="color: green;">+</span>	+8% <span style="color: green;">+</span>
	Mathematics GCSE	145	5.2 <span style="color: green;">+</span>	81% <span style="color: green;">+</span>	28% <span style="color: green;">+</span>	+1.08 <span style="color: green;">+</span>	+16% <span style="color: green;">+</span>	+16% <span style="color: green;">+</span>
<b>Ebacc Subjects</b>	Arabic GCSE	6	8.5	100%	100%	+2.66	+23%	+53%
	Biology GCSE	27	7.0 <span style="color: green;">+</span>	100%	63% <span style="color: green;">+</span>	+1.20 <span style="color: green;">+</span>	+7%	+29% <span style="color: green;">+</span>
	Chemistry GCSE	27	7.5 <span style="color: green;">+</span>	100%	74% <span style="color: green;">+</span>	+1.65 <span style="color: green;">+</span>	+9%	+40% <span style="color: green;">+</span>
	Com.Stds/Comp uting GCSE	28	4.2	68%	14%	+0.64	+19%	+5%
	Geography GCSE	103	4.8	74% <span style="color: green;">+</span>	24%	+0.90 <span style="color: green;">+</span>	+21% <span style="color: green;">+</span>	+12% <span style="color: green;">+</span>
	History GCSE	56	4.8	71%	20%	+1.05 <span style="color: green;">+</span>	+22% <span style="color: green;">+</span>	+8%
	Persian GCSE	5	7.4	100%	80%	+1.12	+21%	+25%
	Physics GCSE	27	7.1 <span style="color: green;">+</span>	100%	67% <span style="color: green;">+</span>	+1.38 <span style="color: green;">+</span>	+10%	+33% <span style="color: green;">+</span>
	Portuguese GCSE	3	7.7	100%	100%	+0.57	+6%	+46%
	Science Double Awd GCSE	118	4.5 <span style="color: green;">+</span>	70%	12%	+0.79 <span style="color: green;">+</span>	+17% <span style="color: green;">+</span>	+7% <span style="color: green;">+</span>
	Spanish GCSE	63	6.2 <span style="color: green;">+</span>	97% <span style="color: green;">+</span>	48% <span style="color: green;">+</span>	+1.96 <span style="color: green;">+</span>	+40% <span style="color: green;">+</span>	+32% <span style="color: green;">+</span>
	Turkish GCSE	4	7.3	100%	75%	+0.13	+3%	+6%
<b>Other High Value Subjects</b>	Art & Design GCSE	33	4.9	73%	27%	+0.29	+2%	+11%
	D&T Food Technology GCSE	37	5.4 <span style="color: green;">+</span>	84% <span style="color: green;">+</span>	19%	+1.33 <span style="color: green;">+</span>	+27% <span style="color: green;">+</span>	+9%
	D&T GCSE	39	3.6 <span style="color: red;">-</span>	56%	3% <span style="color: red;">-</span>	-0.21	+5%	-5%
	Drama GCSE	23	3.7 <span style="color: red;">-</span>	48% <span style="color: red;">-</span>	0% <span style="color: red;">-</span>	+0.14	+5%	-5%
	Health & Social Care Non-GCSE	22	4.5	77%	18%	+0.47	+8%	+4%
	Music Non-GCSE	18	4.4	72%	17%	-0.55	+9%	-9%
	Physical Education/Sport Studies Non-GCSE	38	4.1 <span style="color: red;">-</span>	71%	16%	-0.50	+4%	-5%
	Psychology GCSE	48	3.6 <span style="color: red;">-</span>	52%	10%	+0.57 <span style="color: green;">+</span>	+16% <span style="color: green;">+</span>	+6%
	Religious Studies GCSE	16	6.4 <span style="color: green;">+</span>	81%	56% <span style="color: green;">+</span>	+2.01 <span style="color: green;">+</span>	+19%	+38% <span style="color: green;">+</span>
	Sociology GCSE	24	4.6	63%	25%	+1.07 <span style="color: green;">+</span>	+14%	+17% <span style="color: green;">+</span>



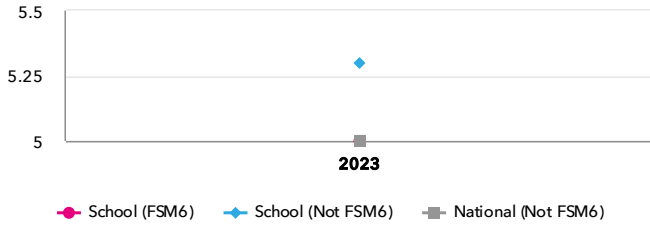
### Census information

KS4's latest academic year uses the Spring 2023 DfE census – [learn more](#) · [See recent Aspire updates](#)

# Disadvantaged pupils

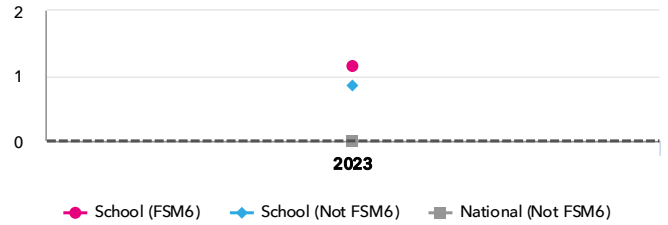
## KS4 attainment for disadvantaged pupils 2023

Attainment 8 (Overall)

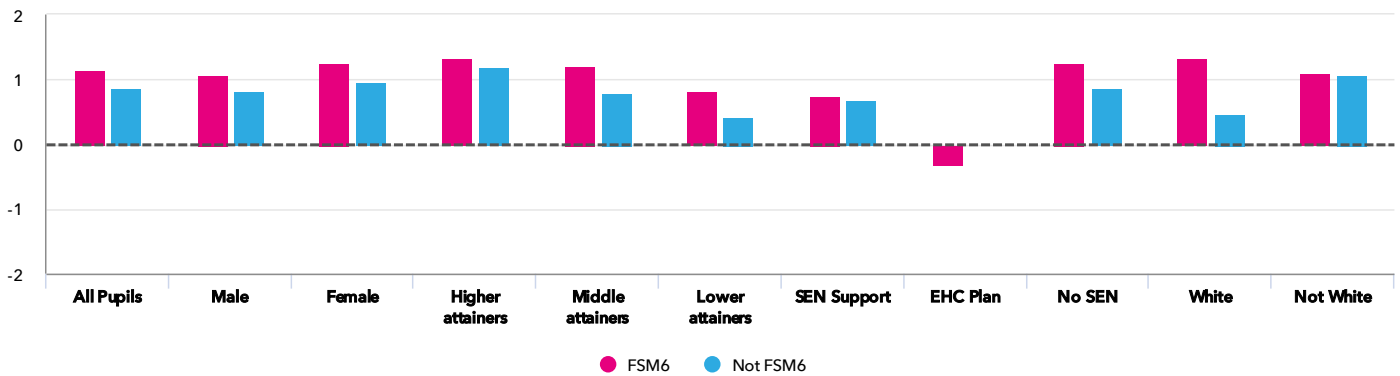


## KS4 progress for disadvantaged pupils 2023

Progress 8 (Overall)



## Progress gap Progress 8 (Overall)



## Attainment & progress

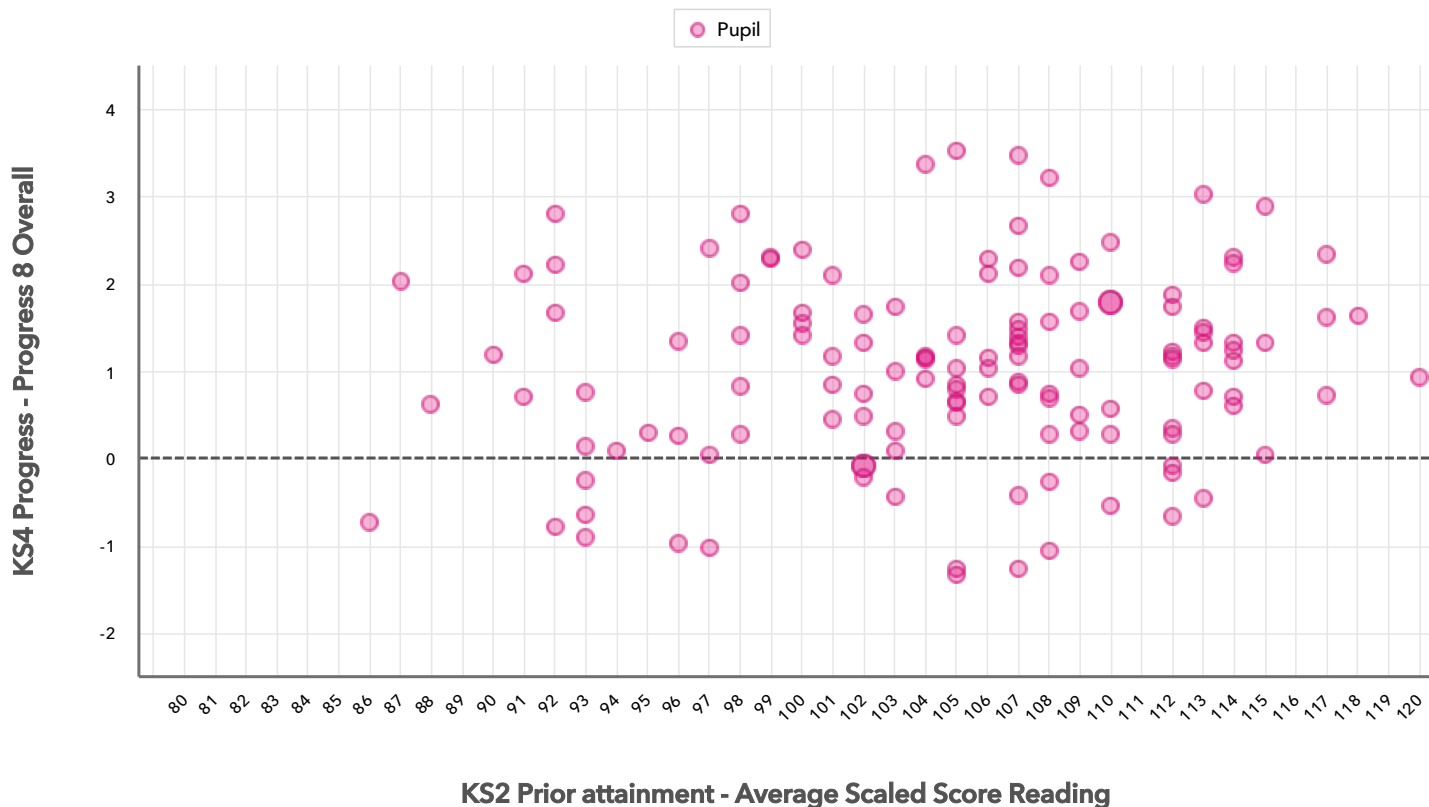
Pupils	Attainment			Progress					
	FSM6	Not FSM6	Attainment 8 (Overall)			Progress 8 (Overall)			
			FSM6	Not FSM6	Gap	FSM6	Not FSM6	Gap	
<b>Summary</b>	All Pupils	83	63	5.3 <sup>+</sup>	5.3	-0.3	1.15 <sup>+</sup>	0.86 <sup>+</sup>	0.29
<b>Gender</b>	Male	42	45	4.6	5.2	-0.6	1.07	0.82	0.25
	Female	41	18	5.5	5.6	-0.1	1.25	0.97	0.28
<b>DFE Prior Attainment</b>	Higher attainers	17	17	7	7.2	-0.2	1.34	1.18	0.16
	Middle attainers	42	32	5.1	5.1	0	1.22	0.8	0.42
	Lower attainers	17	8	3.1	3.2	-0.1	0.81	0.43	0.38
<b>SEN Group</b>	SEN Support	8	4	4.1	3.7	0.4	0.74	0.68	0.06
	EHC Plan	4	-	1.3	-	-	-0.32	-	-
	No SEN	71	59	5.3	5.4	-0.1	1.27	0.87	0.4
<b>Ethnic Group</b>	White	19	24	5.2	4.2	1	1.33	0.47	0.86
	Not White	64	39	4.9	6	-1.1	1.1	1.07	0.03

### Census information

KS4's latest academic year uses the Spring 2023 DfE census – [learn more](#) · [See recent Aspire updates](#)

# Scatterplot

KS4 Pupil scatterplot 2023 146 pupils highlighted by All pupils ▼



### Census information

KS4's latest academic year uses the Spring 2023 DfE census – [learn more](#) · [See recent Aspire updates](#)

# Context

## Context · Year 11

		Pupils	Comparative profile 2022 / 2023		Absence during Key Stage 4		Persistent absence during Key Stage 4	
		School	School	National	School	National	School	National
<b>Summary</b>	All Pupils	153	100%	100%	-	-	-	-
<b>Gender</b>	Male	91	59%	51%	-	-	-	-
	Female	62	41%	49%	-	-	-	-
<b>DFE Prior Attainment</b>	Higher attainers	34	22%	22%	-	-	-	-
	Middle attainers	76	50%	50%	-	-	-	-
	Lower attainers	25	16%	22%	-	-	-	-
<b>Pupil Premium</b>	FSM (in last 6 years)	88	58%	26%	-	-	-	-
	Not FSM (in last 6 years)	65	42%	74%	-	-	-	-
<b>FSM</b>	FSM	79	52%	23%	-	-	-	-
	Not FSM	74	48%	76%	-	-	-	-
<b>FSM Ever</b>	FSM (ever)	116	76%	34%	-	-	-	-
	Not FSM (ever)	37	24%	65%	-	-	-	-
<b>Term of Birth</b>	Autumn Term	62	41%	33%	-	-	-	-
	Spring Term	47	31%	32%	-	-	-	-
	Summer Term	44	29%	35%	-	-	-	-
<b>SEN Group</b>	SEN Support	14	9%	12%	-	-	-	-
	EHC Plan	4	3%	5%	-	-	-	-
	No SEN	134	88%	82%	-	-	-	-
<b>EAL</b>	First language not English	100	65%	18%	-	-	-	-
	First language English	51	33%	81%	-	-	-	-
<b>Mobility</b>	Joined in Y10 or Y11	7	5%	4%	-	-	-	-
	Joined before Y10	146	95%	96%	-	-	-	-
<b>Ethnicity</b>	White	45	29%	71%	-	-	-	-
	Black Caribbean	8	5%	3%	-	-	-	-
	Black African	38	25%	6%	-	-	-	-
	Indian	3	2%	3%	-	-	-	-
	Pakistani	1	1%	4%	-	-	-	-
	Bangladeshi	1	1%	2%	-	-	-	-
	Other Asian	9	6%	3%	-	-	-	-
	Chinese	3	2%	1%	-	-	-	-
	Any Other	41	27%	4%	-	-	-	-
	Unknown	4	3%	2%	-	-	-	-

### Census information

KS4's latest academic year uses the Spring 2023 DfE census – [learn more](#) · [See recent Aspire updates](#)